



MICROCRYSTALLINE ARKANSAS NOVACULITE
PO Box 1238, HOT SPRINGS, AR 71902-1238 USA
501-623-8893 / FAX 501-623-5113

malvern
MINERALS COMPANY

Data Sheet

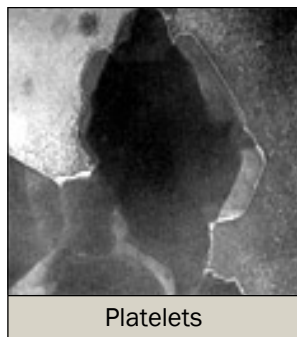
DISTRIBUTED BY: R.E. CARROLL, INC. 1570 NORTH OLDEN AVE. TRENTON NJ 08638-3204
PH: 609-695-6211/800-257-9365 FAX: 609-695-0102 www.recarroll.com

L-207A Novacite®

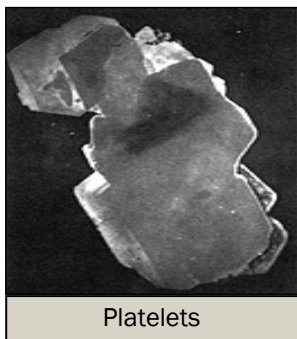
THE PREMIER PRODUCT OF MALVERN MINERALS CO

MICRONIZED QUARTZ

Properties	(Typical)	
Specific Gravity		2.65
Index of Refraction		1.550
Color (Dry)		White
Color (Wet)		Gray-Tan
Oil Adsorption (Spatula)	Rub Out Method	17-20%
Particle Shape	1-7 microns	Platey
Particle Shape	Over 7 microns	Clusters
pH		6.0-7.8
Acid Number		0(-0-18)
Thermal Stability (in its phase)	Absolute Zero to 573° C	
Specific Heat (Mean between 0-200° C)		.192 Cal/g/C°
Surface Modification		Very Receptive
Hardness		7 Mohs Scale
Moisture (Finished Product) 110° C 3 Hours		0.0%
Loss on Ignition (Typical) 1000° C 30 Minutes		0.20%
Loose Packed		50 lbs/Ft ³
Dense Packed		80 lbs/Ft ³



Platelets



Platelets

Micro Diameter	U.S. Series Number	Percent Finer Than*	Fineness of Dispersion
30μ	475	100	Hegman Grind 6 - 7
20μ	625	100	
15μ	950	100	
10μ	1250	95-100	
5μ	2500	50	
1μ	12500	2	
Average Particle Size (Range) Fisher 3μ to 5μ			
*These values are averages			

Chemical Analysis (Typical)	
SiO ₂	99.49%
Fe ₂ O ₃	.039%
Al ₂ O ₃	.102%
TiO ₂	.015%
CaO	.014%
MgO	.021%

Typical Applications
Casting resins
Potting compounds
Molding compounds
Abrasive medium (Wet blasting)
Pipe Linings
Interior and Exterior latex paints

General Information

L-207A Novacite® is the "star" of the Line. Normally the product will disperse to a 7 Hegman Grind. All particles are individually platey with few clusters. 98% of the particles will fall between one and ten microns. L-207A as fine as it is still has the uniqueness of low binder demand with superior flow properties.

Other Novacite® grades include: 200, 325, S-325, 1250, Daper, L-337, and 5μ Novacite®.

Other services include: Toll Treatment, Toll Grinding, and Toll Blending.

Please visit us at our website: www.malvernminerals.com or e-mail at: novacite@malvernminerals.com

Novacite® is a naturally occurring product. The chart above indicates typical particle size distributions. Generally the top size can be controlled through classification machinery; however, sub-sieve distribution and relation above are impossible to predict with accuracy. The nature of fineness or coarseness varies with the character of the crude ore.

Information contained herein is intended only for evaluation by technically skilled persons, and is to be used by such persons at their own risk. Such information is believed to be reliable, but Malvern Minerals Co assumes no responsibility for results obtained or damages resulting from such use. Typical properties and chemical analyses are intended as examples and are not to be considered as substitutes for actual analyses in those situations where properties and chemical compositions are critical factors. Sales of Malvern Minerals Co products shall be independent and subject exclusively to the terms and conditions set forth in Malvern's order acknowledgement.