



MICROCRYSTALLINE ARKANSAS NOVACULITE
PO Box 1238, HOT SPRINGS, AR 71902-1238 USA
501-623-8893 / FAX 501-623-5113

malvern
MINERALS COMPANY

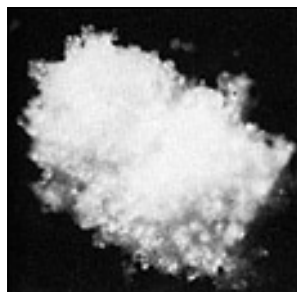
Data Sheet

DISTRIBUTED BY: R.E. CARROLL, INC. 1570 NORTH OLDEN AVE. TRENTON NJ 08638-3204
PH: 609-695-6211/800-257-9365 FAX: 609-695-0102 www.recarroll.com

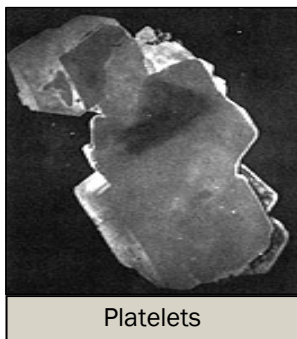
325 Novacite®

MICRONIZED QUARTZ

Properties		(Typical)
Specific Gravity		2.65
Index of Refraction		1.550
Color (Dry)		White
Color (Wet)		Gray-Tan
Oil Adsorption (Spatula)	Rub Out Method	17-20%
Particle Shape	1-7 microns	Platey
Particle Shape	Over 7 microns	Clusters
pH		6.0-7.8
Acid Number		0(-0-18)
Thermal Stability (in its phase)	Absolute Zero to 573° C	
Specific Heat (Mean between 0-200° C)		.192 Cal/g/C°
Surface Modification		Very Receptive
Hardness		7 Mohs Scale
Moisture (Finished Product) 110° C 3 Hours		0.0%
Loss on Ignition (Typical) 1000° C 30 Minutes		0.20%
Loose Packed		50 lbs/Ft ³
Dense Packed		80 lbs/Ft ³



Cluster 70X



Platelets

Micro Diameter	U.S. Series Number	Percent Finer Than*	Fineness of Dispersion
74μ	200	99	Hegman Grind 0 - 2
53μ	270	98	
44μ	325	93-98	
10μ	1250	36	
Average Particle Size (Range) Fisher 7μ to 15μ			
*These values are averages			

Chemical Analysis (Typical)	
SiO ₂	99.49%
Fe ₂ O ₃	.039%
Al ₂ O ₃	.102%
TiO ₂	.015%
CaO	.014%
MgO	.021%

Typical Applications
Casting resins
Potting compounds
Molding compounds
Abrasive medium (Wet blasting)
Pipe Linings
Interior and Exterior latex paints

General Information

325 Novacite® is a typical 325 mesh product although its specifications vary rather widely. You will note the percentage passing 325 mesh can be as low as 88% and as high as 99%. A good product where lower binder demand in the 44μ range is preferred.

Other Novacite® grades include: 200, S-325, 1250, Daper, L-207A, L-337, and 5μ Novacite®.

Other services include: Toll Treatment, Toll Grinding, and Toll Blending.

Please visit us at our website: www.malvernminerals.com or e-mail at: novacite@malvernminerals.com

Novacite® is a naturally occurring product. The chart above indicates typical particle size distributions. Generally the top size can be controlled through classification machinery; however, sub-sieve distribution and relation above are impossible to predict with accuracy. The nature of fineness or coarseness varies with the character of the crude ore.

Information contained herein is intended only for evaluation by technically skilled persons, and is to be used by such persons at their own risk. Such information is believed to be reliable, but Malvern Minerals Co assumes no responsibility for results obtained or damages resulting from such use. Typical properties and chemical analyses are intended as examples and are not to be considered as substitutes for actual analyses in those situations where properties and chemical compositions are critical factors. Sales of Malvern Minerals Co products shall be independent and subject exclusively to the terms and conditions set forth in Malvern's order acknowledgement.