

Distributed By: R.E. CARROLL, INC.  
 1570 NORTH OLDEN AVENUE  
 TRENTON, N.J. 08638-3204  
 PH: 609-695-6211/800-257-9365  
 FAX: 609-695-0102  
 www.recarroll.com

## Technical Data Sheet

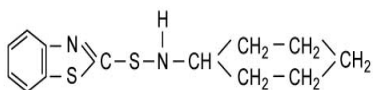
# CBS

N-Cyclohexyl-2-benzothiazole sulphenamide

CAS Number: 95-33-0

Molecular weight: 264.40

Molecular formula: C<sub>13</sub>H<sub>16</sub>N<sub>2</sub>S<sub>2</sub>



### PRODUCT INFORMATION

PRODUCT SPECIFICATIONS		GRANULES	OIL POWDER	POWDER
Appearance		White granules	White oil powder	White powder
Melting Point	°C min	98.0	98.0	98.0
Loss on drying	% max	0.30	0.40	0.30
Ash	% max	0.30	0.40	0.30
Free Amine	% max	0.40	0.40	0.40
Residue on sieve (150µm)	% max	-	0.10	0.10
Oil content	%	-	1.0-2.0	-
<u>Typical properties</u>				
Density	g/cm <sup>3</sup>	1.31-1.34		
<u>Packaging</u>				
Bag		25kg (55 lbs)		
Pallet		500kg or 600kg (1102 lbs or 1323 lbs)		

### FUNCTION

CBS functions as a delayed action accelerator providing a good scorch delay and fast cure rates.

## **APPLICATIONS AND PROPERTIES**

- CBS is a medium to fast primary accelerator suitable for NR, IR, SBR, NBR, HR and EPDM.
- Material is an outstanding delayed action accelerator.
- Product is most effective and safest when used at ordinary processing temperatures, causing no scorching.
- Once vulcanized, CBS shows excellent physical properties.
- Material has a slight odour.
- Soluble in benzene, chloroform, carbon disulfide. Insoluble in water.
- CBS is regulated for use under the following sections of FDA 21 CFR:  
177.2600 – Rubber Articles Intended for Repeated Use in Food Contact.

## **STORAGE**

Material should be stored in a cool, dry, well ventilated area, away from high temperatures. The maximum recommended storage life is 1 year when stored under normal conditions.

## **HANDLING PRECAUTIONS**

For detailed information on toxicological properties and handling precautions, please refer to the current Safety Data Sheet. This information is available by request.

*[Revised: November 3, 2014]*